

Dítec

ENTRE//MATIC

Entrematic USA Low Energy Products Price List

List prices effective November 15, 2018 (Rev 1)



This price list supersedes and cancels all previous price lists. Prices shown are subject to change without notice. Login to the distributor area for most current revision.

Entrematic USA Inc.

1900 Airport Road
Monroe, NC 28110
Main: 704-290-0980
Toll Free: 1 866-901-4284
Fax: 704-919-5014
www.ditecentrematic.us

Blue Houser
Product & Business Development Manager
Cell: 803-804-3768
blue.houser@entrematic.com

Mary Schlegel
Account Development & US Distribution Office Manager
Cell: 412-584-7834
mary.schlegel@entrematic.com

Missy Laney
Senior Customer Service Rep
Phone: 704-290-0980
missy.laney@entrematic.com

Jack Carducci
Tech Support
Phone: 1-877-348-6837 ext. 6081
jack.carducci@entrematic.com

Kristina McClain
Marketing Coordinator
Direct: 704-290-5541
kristina.mcclain@entrematic.com

Mark Ferraro
Security Hardware, Inc.
Manufacturer's Rep & Consultant
(Hardware Channel - California)
Cell: 714-920-6440
mferraro@securityhardware.com

Rusty Rulapaugh
Regional Sales Manager
Cell: 864-640-2651
rusty.rulapaugh@entrematic.com

Liam Lehn
Regional Sales Manager
Cell: 330-360-2601
liam.lehn@entrematic.com

Holiday Schedule

Entrematic USA will be CLOSED on the following dates:

2018

Thanksgiving Day – November 22
Day After Thanksgiving – November 23
Christmas Eve – December 24
Christmas Day – December 25

2019

New Year's Day – January 1
President's Day – February 18
Memorial Day – May 27
Independence Day – July 4
Labor Day – September 2
Thanksgiving Day – November 28
Day After Thanksgiving – November 29
Christmas Day – December 25

Do you have access to the Distributor Area?

Download current price lists, brochures and product images from our secure distributor area at www.ditecentrematic.us.

Email info.ditec.us@entrematic.com for access.



Shipping Information

Standard Shipping

- Standard orders will ship in 3-5 business days
- Place \$5000 minimum order to receive FREE freight (on swing products only)
- \$15 drop ship fee



Quick Ship Program

- Items listed in bold qualify for *Quick Ship*
- Orders placed by 11:00am EST will ship same day; orders placed after 11 will ship next day
- FREE ground freight
- 25% is added to list price for *Quick Ship* items
- We reserve the right to limit quantities
- \$15 drop ship fee applies
- No changes or cancellations can be accepted
- Quoted projects do not qualify for *Quick Ship* program

36 Month Limited Warranty - 2018

Entrematic USA Inc. Warrants to the original purchaser of this **Entrematic USA Inc.** automatic door (swing door operator or slider), that the company will repair or exchange, at its option, any part of the door operator that fails by reason of defective material or workmanship as follows:

- 0-24 months from the date of door operator purchase: Repair or replace parts. Excludes wear parts.
- 25-36 months from the date of door operator purchase: Parts replaced at 50% of cost, excluding wear parts.
- Repair or Replacement parts sold individually (not with a door operator) will be repaired or replaced for 12 months after date of purchase.

The extent of our liability for breach of such warranty, when such is shown to our satisfaction, shall be limited to a functionally equivalent replacement, or repair of such product, or part thereof, at Entrematic USA Inc. sole discretion, when returned, delivery prepaid, to **Entrematic USA Inc.** We shall not, except to the extent this limitation may be precluded by law, be liable for inconvenience, labor costs, shipping costs, damages to other property, injury or any other consequential damages resulting directly or indirectly from any product defect or breach of this warranty. This warranty is limited to the original End User Purchaser (distributor), is not transferable and shall not apply to maintenance, wear and tear caused by normal use, altered product, abuse or neglect.

To obtain warranty service, you must promptly notify the authorized **Entrematic USA Inc. authorized dealer** from whom the equipment was purchased, within the warranty period to receive an RMA number.

- Please ensure the RMA number appears on the return shipment label and is legible.
- Return the authorized merchandise within sixty (60) days from the date of RMA issuance date.
- Return shipments must be freight prepaid to the location specified on the RMA. Entrematic USA Inc. is not liable damages to product during shipping.
- Replacement product will be invoiced at normal replacement parts cost and will be credited back after receipt of RMA.

No credit may be taken or issued prior to RMA approval and receipt of product. All defective goods within the terms of our limited warranty may be returned for credit or replacement.

This warranty does not cover:

Malfunction of damage to door operator parts caused by accident, misuse, improper wiring, abuse or lack of proper maintenance, neglect, improper adjustment, modification, alteration, the structural condition of your building, overloading, failure to follow the door operator operating instructions, riot, or acts of God (i.e. weather, lightning, flood, etc.).

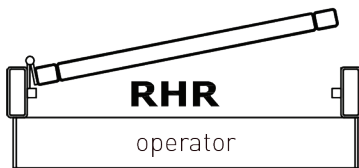
Sensors, push plates and other accessories built by other manufacturers.

This warranty is void if:

Door operator has been installed or maintained by someone other than an authorized **Entrematic USA Inc. dealer**. Door operator has been modified or altered in any respect from its original design without written authorization by **Entrematic USA Inc.**

Swing Door Operator Handing Terminology Chart

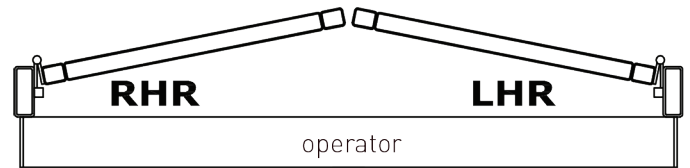
Note: Operator Handing Terminology is universal for all types of door pivot rotation. Door can be Butt Hung as shown; Continuous Hinge; Offset Pivot or Overhead Concealed Center Pivot.



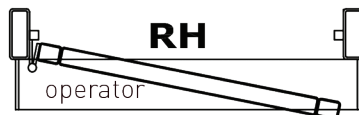
**LEFT HAND PUSH ARM
(OUTSWING)**



**RIGHT HAND PUSH ARM
(OUTSWING)**



**DUAL (PAIR) PUSH ARM
(OUTSWING)**



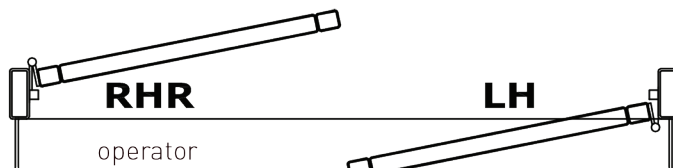
**RIGHT HAND PULL TRACK
(INSWING)**



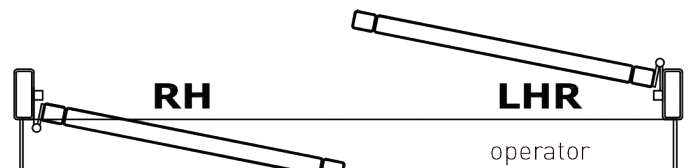
**LEFT HAND PULL TRACK
(INSWING)**



**DUAL (PAIR) PULL TRACK
(INSWING)**



**LEFT HAND
DUAL (DOUBLE) EGRESS**



**RIGHT HAND
DUAL (DOUBLE) EGRESS**

Header Sizing Guidelines

Header Size	Door Width
39"	36" Single
45"	42" Single
51"	48" Single
75"	36" Pair
87"	42" Pair
99"	48" Pair

How to Order Ditec Low Energy Operators

	HA	8	SP	RPS	CL	XP-1/4	PNG	39
Product Series								
HA-low energy								
Model								
8								
Style								
SP-standard profile LP- low profile								
Application								
Single LPL - left hand pull LPS - left hand push RPL- right hand pull RPS - right hand push LH-UA - lh universal (LP only) RH-UA - rh universal (LP only)	Pairs LPL-RPL - lh&rh pull for pair LPS-RPS - lh&rh push for pair LH-UA-RH-UA - lh&rh universal (LP only) Dual Egress RPL-RPS - rh pull & rh push LPL-LPS - lh pull & lh push							
*Universal Arm available on SP by special request								
Finish								
CL- Clear BZ- Dark Bronze								
Motor								
XP-1/4 - xp spring & 1/4 hp motor Standard- Blank								
Operation								
PNG- Push & Go Standard - Blank								
Header Width								
39 - fits single 36" door 75- fits pair of 36" doors 41 - fits single 38" door 79- fits pair of 38" doors 45- fits single 42" door 87- fits pair of 42" doors 51- fits single 48" door 99- fits pair of 48" doors								

Special Options:

Extended Push Arm (up to 18" reveal)
 Extended Pull Arm (up to 8" reveal)
 Extended Spindle Shaft (SP) - 9 3/4"
 Extended Spindle Shaft (LP) - 1 1/2"
 Dual Egress
 Universal Arm for SP (by special request)

Use this code to place your order:

HA	8						
----	---	--	--	--	--	--	--

Now Available
The Ditec HA8-LP
in Tuxedo Black



See Page 9 for pricing.

ENTRE//MATIC

Low Energy Ditec HA8-Standard Profile Series Door Operators

(Note: Errors, omissions, product, and price changes are subject to correction without notice.)



Surface Mounted

Unit	Application	Finish	List Price
HA8-SP (single, 39", 45" or 51")	Push or Pull	Clear or Bronze	\$3,101.00
HA8-SP (single, 39", 45" or 51")	Universal Arm with extended pull track <i>(*see notes)</i>	Clear or Bronze	\$3,238.00
HA8-SP (dual 75")	Push or Pull, Fits pair of 36" doors	Clear or Bronze	\$6,201.00
HA8-SP (dual 75")	Universal Arm, Fits pair of 36" doors <i>(*see notes)</i>	Clear or Bronze	\$6,477.00
HA8-SP (dual 87")	Push or Pull, Fits pair of 42" doors	Clear or Bronze	\$6,201.00
HA8-SP (dual 87")	Universal Arm, Fits pair of 42" doors <i>(*see notes)</i>	Clear or Bronze	\$6,477.00
HA8-SP (dual 99")	Push or Pull, Fits pair of 48" doors	Clear or Bronze	\$6,201.00
HA8-SP (dual 99")	Universal Arm, Fits pair of 48" doors <i>(*see notes)</i>	Clear or Bronze	\$6,477.00
	Factory Installed Upgrades		
	Push & Go Feature (Clutch removed)	Add	\$170.00
	Dual Egress Feature	Add	\$310.00
	HD Upgrade (single) includes 1/4 HP motor and XP spring	Add	\$906.00
	HD Upgrade (dual) includes 1/4 HP motor and XP spring	Add	\$1,813.00
	Extended Spindle Shaft – 9-3/4"	Add	\$243.00

Notes:

- Contact Customer Service when ordering an SP with Universal Arm
- Upgrade prices reflect a single motor/gearbox (except Dual Egress). Estimate cost accordingly.
- Items in bold qualify for Quick Ship

Low Energy Ditec HA8-Low Profile Series Door Operators



Surface Mounted

Unit	Application	Finish	List Price
HA8-LP (single, 39", 45" or 51")	Push or Pull	Clear or Bronze	\$2,946.00
HA8-LP (single, 39", 45" or 51")	Universal Arm with extended pull track	Clear or Bronze	\$3,085.00
HA8-LP (dual 75")	Push or Pull, Fits pair of 36" doors	Clear or Bronze	\$5,887.00
HA8-LP (dual 75")	Universal Arm, Fits pair of 36" doors	Clear or Bronze	\$6,169.00
HA8-LP (dual 87")	Push or Pull, Fits pair of 42" doors	Clear or Bronze	\$5,887.00
HA8-LP (dual 87")	Universal Arm, Fits pair of 42" doors	Clear or Bronze	\$6,169.00
HA8-LP (dual 99")	Push or Pull, Fits pair of 48" doors	Clear or Bronze	\$5,887.00
HA8-LP (dual 99")	Universal Arm, Fits pair of 48" doors	Clear or Bronze	\$6,169.00
Factory Installed Upgrades			
	Push & Go Feature (Clutch removed)	Add	\$170.00
	Dual Egress Feature	Add	\$310.00
	HD Upgrade (single) includes 1/4 HP motor and XP spring	Add	\$906.00
	HD Upgrade (dual) includes 1/4 HP motor and XP spring	Add	\$1,813.00
	Tuxedo Black finish for single units (39", 45" or 51")	Add	\$554.00
	Tuxedo Black finish for dual units (75")	Add	\$1,059.00

Notes:

- Upgrade prices reflect a single motor/gearbox (except Dual Egress). Estimate cost accordingly.
- Swinger Package Limited 3 Year Warranty from Ship Date. See Warranty Statement.
- Items in bold qualify for Quick Ship.

Ditec EZ36 Kits - Automate a 36" Door in One Box



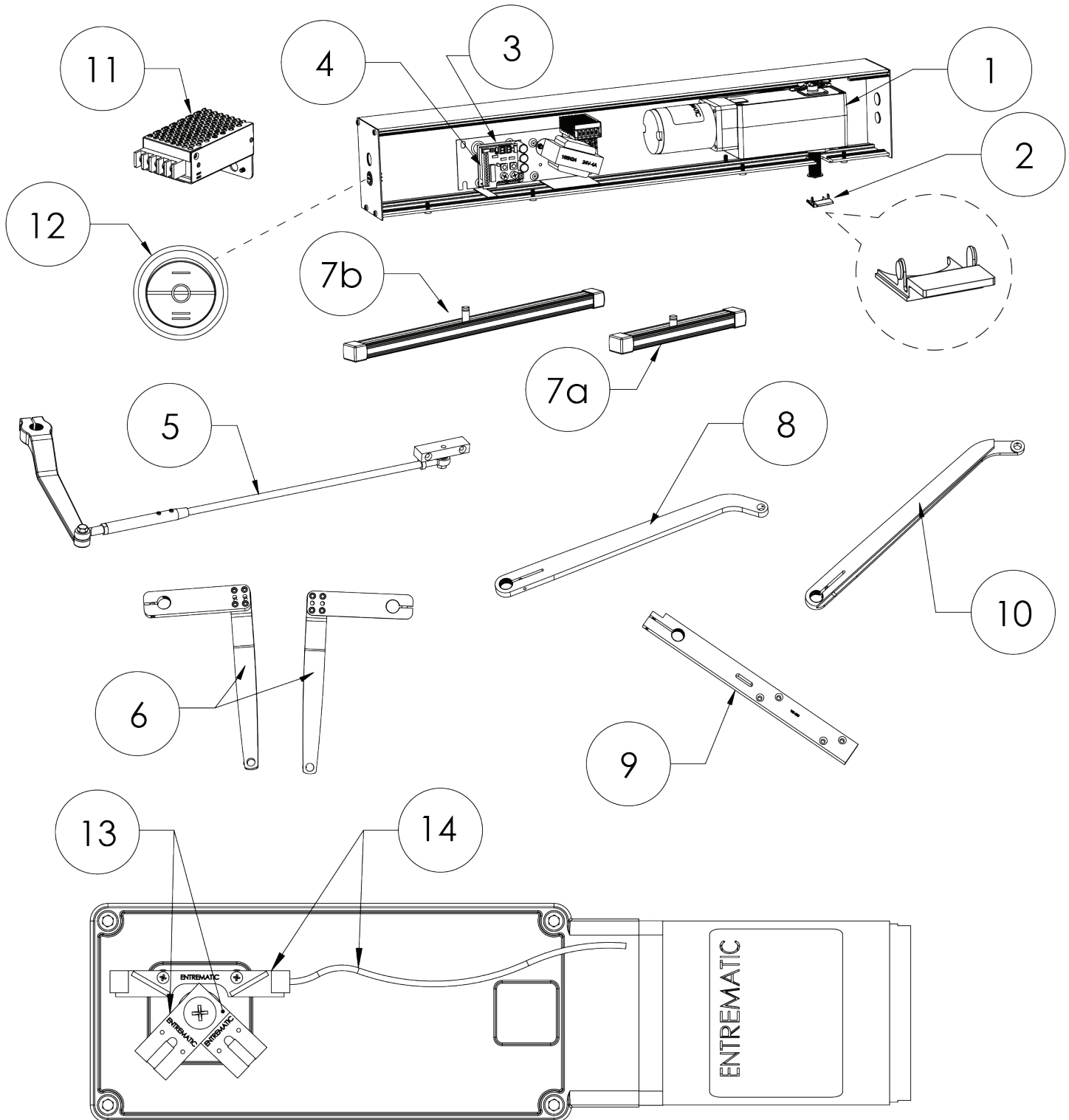
Ditec HA8-LP EZ Series Door Operator Kit

Part No.	Description	Finish	List Price
W9-200	Low-profile operator with push arm, (2) square 4.5" push plates, (2) surface mount boxes, (2) 900 MHz transmitters and (1) 900 MHz receiver	Clear	\$4,132.00
W9-205	Low-profile operator with pull arm for left hand, (2) square 4.5" push plates, (2) surface mount boxes, (2) 900 MHz transmitters and (1) 900 MHz receiver	Clear	\$4,132.00
W9-210	Low-profile operator with pull arm for right hand, (2) square 4.5" push plates, (2) surface mount boxes, (2) 900 MHz transmitters and (1) 900 MHz receiver	Clear	\$4,132.00
W9-215	Low-profile operator with universal arm, (2) square 4.5" push plates, (2) surface mount boxes, (2) 900 MHz transmitters and (1) 900 MHz receiver	Clear	\$4,238.00
W9-220	Low-profile operator with push arm, (2) square 4.5" push plates, (2) surface mount boxes, (2) 900 MHz transmitters and (1) 900 MHz receiver	Dark Bronze	\$4,132.00
W9-225	Low-profile operator with pull arm for left hand, (2) square 4.5" push plates, (2) surface mount boxes, (2) 900 MHz transmitters and (1) 900 MHz receiver	Dark Bronze	\$4,132.00
W9-230	Low-profile operator with pull arm for right hand, (2) square 4.5" push plates, (2) surface mount boxes, (2) 900 MHz transmitters and (1) 900 MHz receiver	Dark Bronze	\$4,132.00
W9-235	Low-profile operator with universal arm, (2) square 4.5" push plates, (2) surface mount boxes, (2) 900 MHz transmitters and (1) 900 MHz receiver	Dark Bronze	\$4,238.00

Notes:

- Items in bold qualify for Quick Ship.
- Call to order any EZ36 in Tuxedo Black finish. Add \$554 to list price.
- Push plates also available in blue with "push to open" text by request.

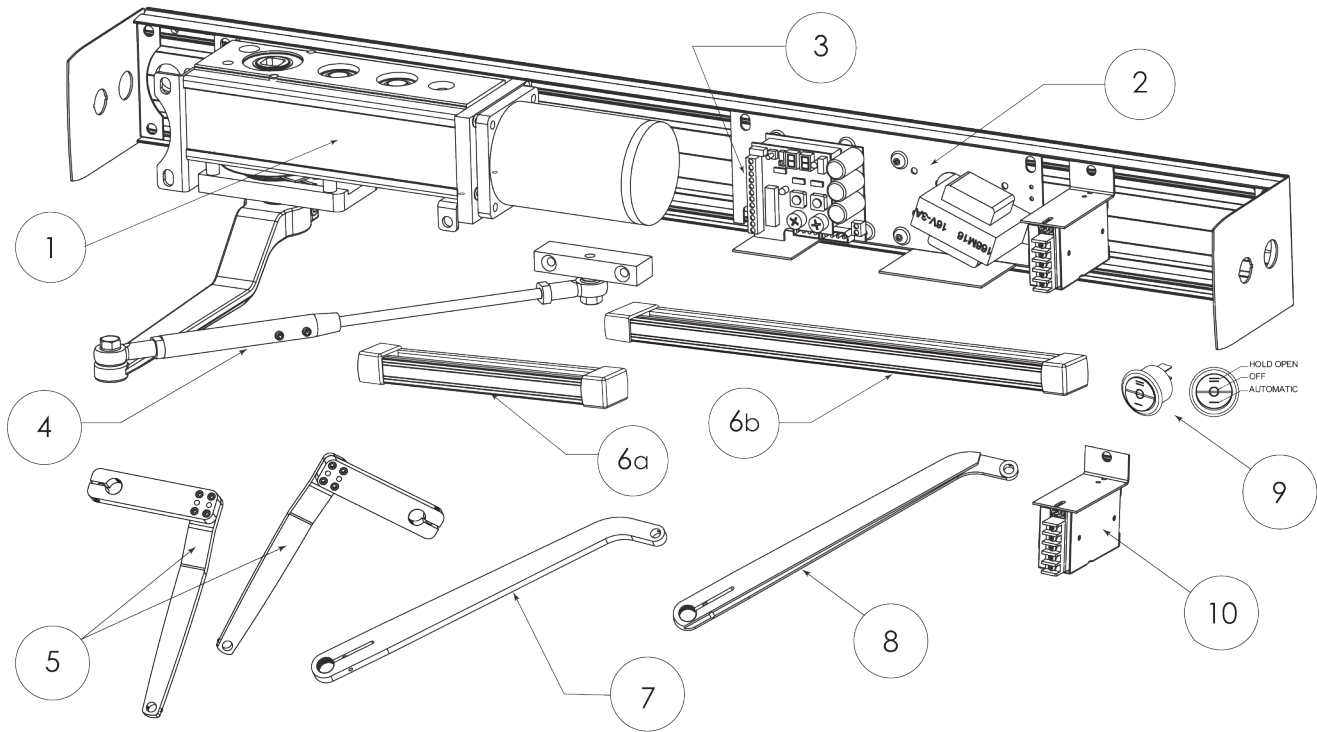
Replacement Parts - Ditec HA8-SP



Replacement Parts - Ditec HA8-SP

Item	Category	Part #	Description	Item	Category	Part #	Description
1	Operators	W7-105L	LH 1/8 hp operator	7a	Arms	W5-550	Pull track assembly - clear
		W7-105R	RH 1/8 hp operator			W5-555	Pull track assembly - bronze
		W7-107L	LH 1/4 hp, XP operator	7b	Arms	W5-551	Pull track assembly long-clear (for Univ/Center Spindle)
		W7-107R	RH 1/4 hp, XP operator			W5-556	Pull track assembly long-bronze (for Univ/Center Spindle)
		W7-106L	LH 1/8 hp, push & go operator	8	Arms	W5-512C	Universal Arm-clear
		W7-106R	RH 1/8 hp, push & go operator			W5-512B	Universal Arm-bronze
		W7-108L	LH XP, 1/4 hp, push & go operator	9	Arms	W5-520	Center Hung Arm 2 3/4"
		W7-108R	RH XP, 1/4 hp, push & go operator			W5-521	Center Hung Arm 3 3/4"
2	Header Cap	W5-557	Header Plastic Cap	10	Arms	W5-511C	Center Spindle-clear (LH)
3	Controls	W7-130-1	HA Digital Control Board			W5-510C	Center Spindle-clear (RH)
		W7-135-1	FA Digital Control Board			W5-511B	Center Spindle-bronze (LH)
		W7-180	Dual Digital Control Board (FA8 only)			W5-510B	Center Spindle-bronze (RH)
		W7-130-1M	HA Digital Control Board w/ monitoring	11	Misc	WL-PWRKIT	RS-25-24 Power supply kit
		W7-135-1M	FA Digital Control Board w/ monitoring	12	Misc	WL-ROCKER-SWITCH	On/off/hold open 3 position switch
4	Controls	W7-180-1M	Dual Digital Control Board w/ monitoring				
		W5-422	3amp fuse (HA8)	13	Misc	W5-416	magnet set, detects back check and latch check phases
5	Arms	W5-430	4amp fush (FA8)	14	Misc	W5-415	reed switch & harness; communicates to control board the position of door
		W7-200	complete push arm-clear				
		W7-205	complete push arm-bronze				
		W5-502C	cast portion only- clear				
6	Arms	W5-502B	cast portion only-bronze				
		W5-506C	Z Arm-RH-Clear				
		W5-505C	Z Arm-LH-Clear				
		W5-506B	Z Arm-RH-Bronze				
		W5-505B	Z Arm-LH-Bronze				
		W5-508C	Ext Z Arm-RH-Clear				
		W5-508B	Ext Z Arm-RH-Black				
		W5-507C	Ext Z Arm-LH-Clear				
		W5-507B	Ext Z Arm-LH-Black				

Replacement Parts - Ditec HA8-LP



Item	Category	Part #	Description
1	Operators	WL-PA03	LP Operator
2	Controls	W7-130-1	Digital Control Board
3	Controls	W5-422	Fuse 3amp digital
4	Arms	W7-200	complete push arm-clear
		W7-205	complete push arm-bronze
5	Arms	W5-506C	Z Arm-RH-Clear
		W5-505C	Z Arm-LH-Clear
		W5-506B	Z Arm-RH-Bronze
		W5-505B	Z Arm-LH-Bronze
		W5-508C	Extended Z Arm-RH-Clear
		W5-507C	Extended Z Arm-LH-Clear
		W5-508B	Extended Z Arm-RH-Black
		W5-507B	Extended Z Arm-LH-Black

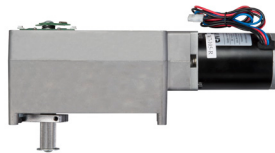
Item	Category	Part #	Description
6a	Arm	W5-550	Pull track assembly-clear
		W5-555	Pull track assembly-bronze
6b	Arms	W5-551	Pull track assembly long-clear (univ arm)
		W5-556	Pull track assembly long-bronze (univ arm)
7	Arms	W5-512C	Universal Arm-clear
		W5-512B	Universal Arm-bronze
8	Arms	W5-510C	Center Spindle-RH-Clear
		W5-511C	Center Spindle-LH-Clear
		W5-510B	Center Spindle-RH-Bronze
		W5-511B	Center Spindle-LH-Bronze
9	Misc	WL-Rocker switch	On-Off-Hold Open 3-position switch
10	Misc	WL-PWRKIT	RS-25-24 Power Supply Kit

Replacement – Spare Parts



Controls

Part No.	Description	List Price
W7-130-1	Digital Control Board for SP & LP with Universal Mounting Bracket	\$411.00
W7-130-1M	HA Digital Control Board with Monitoring	\$548.00
W5-422	3 Amp Fuses – std controls, long, digital (6 pack)	\$21.00



Operators

Part No.	Description	List Price
W7-100R	HA8-SP Operator with standard spring (right hand) (fits cast SP models prior to 11/30/17)	\$1,322.00
W7-100L	HA8-SP Operator with standard spring (left hand) (fits cast SP models prior to 11/30/17)	\$1,322.00
W7-110R	HA8-SP Operator with XP spring (right hand) (fits cast SP models prior to 11/30/17)	\$1,509.00
W7-110L	HA8-SP Operator with XP spring (left hand) (fits cast SP models prior to 11/30/17)	\$1,509.00
WL-PA03	HA8-LP Operator – non-handed with standard spring	\$1,171.00
W7-105L	HA8-SP Operator with standard spring (left hand) (fits SP models after 12/1/17)	\$1,268.00
W7-105R	HA8-SP Operator with standard spring (right hand) (fits SP models after 12/1/17)	\$1,268.00
W7-106L	HA8-SP Operator with push & go (left hand) (fits SP models after 12/1/17)	\$1,437.00
W7-106R	HA8-SP Operator with push & go (right hand) (fits SP models after 12/1/17)	\$1,437.00
W7-107L	HA8-SP Operator with XP spring & 1/4 hp motor (left hand) (fits SP models after 12/1/17)	\$2,173.00
W7-107R	HA8-SP Operator with XP spring & 1/4 hp motor (right hand) (fits SP models after 12/1/17)	\$2,173.00
W7-108L	HA8-SP Operator w/ XP spring, 1/4 hp motor, push & go (left hand) (models after 12/1/17)	\$2,345.00
W7-108R	HA8-SP Operator w/ XP spring, 1/4 hp motor, push & go (right hand) (models after 12/1/17)	\$2,345.00



Arms

Part No.	Description	List Price
W7-200	Push Arm Complete -Clear	\$282.00
W7-205	Push Arm Complete - Bronze	\$282.00
W5-502B	Push Arm, Main Arm Only- Bronze	\$138.00
W5-502C	Push Arm, Main Arm Only - Clear	\$138.00
W5-505B	Z/Pull Arm Left - Bronze (for complete assembly order track below)	\$249.00
W5-506B	Z/Pull Arm Right - Bronze (for complete assembly order track below)	\$249.00
W5-555	Pull Arm Track Assembly (11-3/8" w/ endcaps) for 90 Degree Arm - Bronze	\$65.00
W5-505C	Z/Pull Arm Left - Clear (for complete assembly order track below)	\$249.00
W5-506C	Z/Pull Arm Right-Clear (for complete assembly order track below)	\$249.00
W5-550	Pull Arm Track Assembly (11-3/8" w/endcaps) for 90 Degree Arm - Clear	\$65.00
W5-512B	Universal Arm - Bronze (for complete assy order track below)	\$224.00
W5-512C	Universal Arm - Clear (for complete assembly order track below)	\$224.00
W5-556	Pull Arm Track Assembly (22") for Universal Arm - Bronze	\$101.00
W5-551	Pull Arm Track Assembly (22") for Universal Arm - Clear	\$101.00
W5-500C	Extended Push Arm Rod (up to 18" reveal) (additional) - Clear	\$58.00
W5-500B	Extended Push Arm Rod (up to 18" reveal) (additional) - Bronze	\$58.00
W5-507C	Extended Pull Arm for Left Hand (up to 8" reveal) - Clear	\$189.00
W5-507B	Extended Pull Arm for Left Hand (up to 8" reveal) - Black	\$189.00
W5-508C	Extended Pull Arm for Right Hand (up to 8" reveal) - Clear	\$189.00
W5-508B	Extended Pull Arm for Right Hand (up to 8" reveal) - Black	\$189.00



Accessory/Sensor Product

Part No.	Description	List Price
W6-103	1.5 x 4.75" stainless steel jamb plate with blue "push to open" text	\$69.00
W6-104	11.5 x 4.75" jamb surface mount box (can be used with W6-103)	\$30.00
W6-107	4.5" square blue push plate with "push to open" text	\$102.00
W6-108	4.5" square stainless steel push plate with blue "push to open" text	\$102.00
P-10BOX45SQSM	4.5" square surface mount box (can be used with W6-107 or W6-108)	\$41.00
W6-121	4.75" x 4.75" Stainless Steel Dual Push Plate for use in Vestibules --- Includes adapter ring, two separate push plates with arrow and blue "push to open" text on one back plate. Requires two P-10TD900PB transmitters.	\$184.00
P-10RD900	Wireless Radio Receiver Digital 900 mhz. Includes integral sequencing "learn" buttons (for vestibule applications), pulse/toggle functionality and additional hold time.	\$124.00
P-10TD900HH1	Digital transmitter, 900 MHz, 1 button hand-held	\$91.00
P-10TD900PB	900 MHz push button transmitter	\$91.00
W5-670	Wave to Open switch for touchless activation. Packaged with single and double gang face plates.	\$143.00
W6-151	Hard Wired 36" Vertical Push Plate	\$758.00
W6-153	36" Vertical Actuation Bar/Low Profile Push Plate with 900 MHz transmitter	\$781.00
W6-133	Wireless Push Button Activation Package. Includes: (2) square 4.5" stainless steel push plates with "push to open" text only, (2) surface mount boxes, (2) 900 MHz transmitters and (1) 900 MHz receiver	\$463.00
W6-134	Wireless Push Button Activation Package. Includes: (2) square 4.5" blue push plates with "push to open" text only, (2) surface mount boxes, (2) 900 MHz transmitters and (1) 900 MHz receiver	\$463.00
W6-135	Wireless Push Button Activation Package. Includes: (2) 1.5" x 4.75" jamb style push plates, (2) surface mount jamb boxes, (2) 900 MHz transmitters and (1) 900 MHz receiver	\$332.00
W6-136	Wireless Push Button Activation Package. Includes: (1) 1.5" x 4.75" jamb style push plates, (1) surface mount jamb boxes, (1) 900 MHz transmitters and (1) 900 MHz receiver	\$279.00
W6-137	Hardwired Push Button Activation Package. Includes: (2) 4.75" square stainless steel push plates, (2) 4.75" square surface mount boxes	\$178.00
W6-143	Wireless Vestibule Push Plate Package Includes: (2) 4.75" square stainless steel plates, (3) surface mount boxes, (4) 900 MHz wireless transmitters, (2) 900 MHz wireless receivers, and (1) 4" x 4" stainless steel dual push plate for use in vestibules	\$795.00

Notes:

- Items in bold qualify for Quick Ship



Accessory/Sensor Product (Continued)

Part No.	Description	List Price
P-10BOLLARD-SLV	Silver/Clear Finish Bollard Mounting Post -- Carbon Steel construction with powder coat paint finish. Dimensions: 42" H x 6" W x 4" D. Accommodates the following push plates: W6-131, W6-139 and W6-121	\$448.00
P-CM-42-BSU-BRZ	Bronze Finish Bollard Mounting Post -- Carbon steel construction with powder coat paint finish. Dimensions: 42" H x 6" W x 4" D. Accommodates the following push plates: W6-131, W6-139 and W6-121	\$448.00
P-10BOLLARD-BLK	Black Finish Bollard Mounting Post -- Carbon steel construction with powder coat paint finish. Dimensions: 42" H x 6" W x 4" D. Accommodates the following push plates: W6-131, W6-139 and W6-121	\$448.00
P-10BR2-900	2-relay logic module with built-in 900 MHz wireless technology	\$206.00
P-9101	Lock-Out Relay	\$112.00
L3-1104	BEA Bodyguard Overhead Presence Sensor utilizing Diffused Active Infrared Technology. Provides safety with two separate patterns: 1. Door fully open 2. Door fully closed. Door open pattern allows for threshold protection. For use with lockout such as P-9101. Maximum mounting height: 9'. Remote control adjustable.	\$460.00
W6-144	BEA LZR Microscan Universal Laser Microscan kit that includes (1) Hub, (4) Microscan sensors, all mounting hardware, accessories, power supply and the 10DOORSWITCH for a simultaneous pair application.	\$2,294.00
L3-1114	BEA LZR Microscan Universal Laser Microscan kit that includes (1) Hub, (2) Microscan sensors, all mounting hardware, accessories, power supply and switch assembly for a single door application.	\$1,227.00
L3-1102	BEA Eagle Microwave Motion Detector. Meets FCC requirements and ANSI Standard. Utilizes K-band microwave technology. Supplied with two antennas: narrow and wide pattern. Mounting height: 7 - 10'. Remote control adjustable.	\$393.00
L3-1127	Optex Pro-Swing Elite detects moving or stationary people in the swing path of the door. For use in single swing, dual egress and simultaneous pair applications.	\$1,357.00
L3-1108-2	BEA SuperScan II door mounted safety sensor. Incorporates (1) master and (1) slave module per housing. Overall length is 34.5". Suggested use for 36" door leaf.	\$390.00
L3-1108-5	BEA SuperScan door mounted safety sensor. Incorporates (1) master and (1) slave module per housing. Overall length is 40" endcap to endcap. Suggested use for 42" door leaf.	\$390.00
L3-1108-7	BEA SuperScan door mounted safety sensor. Incorporates (1) master and (1) slave module per housing. Overall length is 42" endcap to endcap. Suggested use for 44" door leaf.	\$390.00
L3-1108-8	BEA SuperScan door mounted safety sensor. Incorporates (1) master and (1) slave module per housing. Overall length is 48" endcap to endcap. Suggested use for 50" door leaf.	\$502.00
W6-147	Entrematic Restroom Kit: Advanced programmable 3-relay logic module, occupied indicator, dual function "push to lock"/ "locked when lit" LED button, and door position switch	\$389.00
W6-148	Entrematic Emergency Add-On Kit	\$664.00



Miscellaneous

Part No.	Description	List Price
WL-P0108	HA8-LP Extended Spindle Shaft (1-1/2" Extension)	\$91.00
W5-415	Reed Switch for SP	\$65.00
WL-P0068	Reed Switch for LP	\$65.00
W5-4151	Reed Switch Harness (SP& LP)	\$18.00
W5-415-2	Reed Switch Harness Extension (SP & LP)	\$23.00
W5-416	Reed Switch Magnets for SP (Back Check)	\$18.00
WL-Rocker	3-Way Rocker Switch (LP & SP models after 12/1/17)	\$13.00
WL-PWRKIT	24 VDC-1.1 amp Aux Power Supply Kit with mounting bracket	\$353.00
W5-528C	Aluminum reinforcement bracket for aluminum storefronts where no backing exists (clear)	\$85.00
W5-528B	Aluminum reinforcement bracket for aluminum storefronts where no backing exists (black)	\$85.00

Decals

Part No.	Description	List Price
W5-620	Wheel Chair Decal – Blue (HA)	\$11.00
W5-621	Caution Decal – Yellow (Round) (HA)	\$11.00
W5-626	Entrematic "Dome" Label	\$11.00
W5-625	Low Energy AAADM Decal	\$10.00

Important Notes

- Replacement Parts Warranty. Limited 1 Year from Ship Date. See Warranty Statement.
- \$50 Minimum order required
- 45% Restocking fee
- \$15 drop ship fee
- Products listed in bold qualify for the *Quick Ship* Program. See program details on page 3.